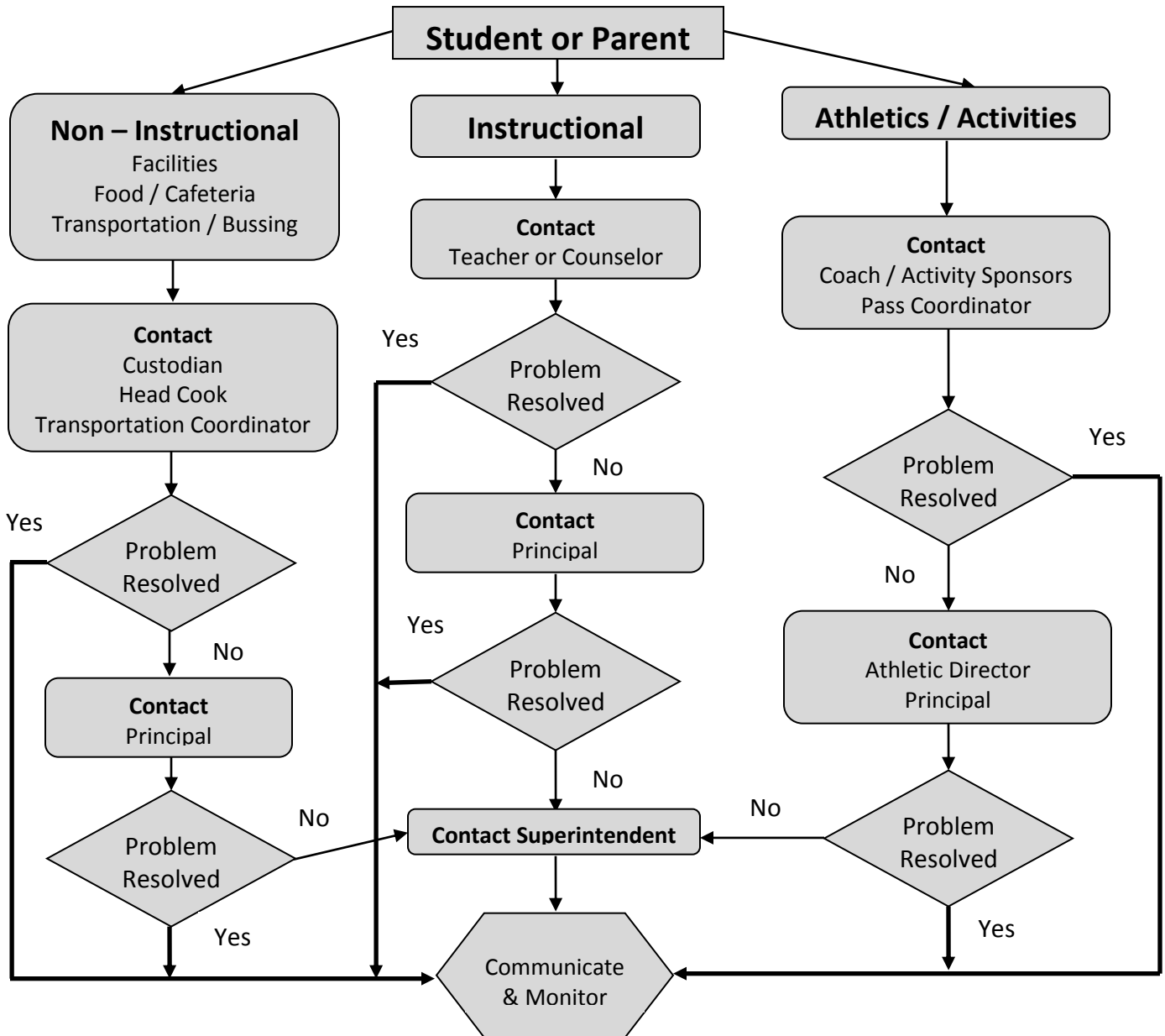


Wessington Springs School District 36-2

Chain of Communication Guidelines



Wessington Springs Schools endeavors to resolve issues within 2 working days

Role of the Board

The Board represents the elected members of the school district in providing direction to the school as follows:

- Policy Making
- Appointment of the Superintendent
- Strategic Planning, Goal Setting and Appraisal

The Board Meets regularly to conduct Board business and to provide a forum for parents and others in the school community to air concerns. It serves as a court of last appeal for disputes within the School.